

# Business as unusual

BY MOUNTAINS AND LAKES



PR

**PLETZER  
RESORTS**

MOVE & RELAX

# A team of 4 individuals with one goal

## INHALT

Arrival .....	4
Green Events .....	6
More is normal .....	8
Hard facts .....	10
Move & Relax .....	13
Move .....	14
Relax .....	17
Energy kitchen .....	18
Team building .....	20
Workation .....	21
Celebrating .....	22
Sustainability .....	25

## THE 4 RESORTS

Das Seepark Wörthersee Resort .....	26
Das Hohe Salve Sportresort .....	30
Das Walchsee Aktivresort .....	34
Das Bayrischzell Familotel Oberbayern .....	40
The Pletzer Story .....	42
All contact addresses .....	back page

### WE LOVE BRINGING PEOPLE TOGETHER

Each of the **4 Pletzer Resorts** with event rooms has its **own unique character**, but they all share the goal of **moving and energising people**.

Our resorts are located in the **mountains**, on **lakes** and in the midst of the **most beautiful natural landscapes** in **Austria** and the **Bavarian Alps**.

In and around the Pletzer Resorts you will find numerous opportunities for **physical and mental relaxation**.

### DIFFERENT FROM THE OTHERS

**Everyone can be normal**, with us business, exercise, relaxation and nutrition become **an overall experience**.

With our **Move & Relax** philosophy and the valuable nutrition of our **Energy kitchen**, we create the ideal conditions to make your **event a moving experience** in every sense of the word.

**COME AND SEE FOR YOURSELF!**

4  
DESTINATIONS

365  
DAYS A YEAR

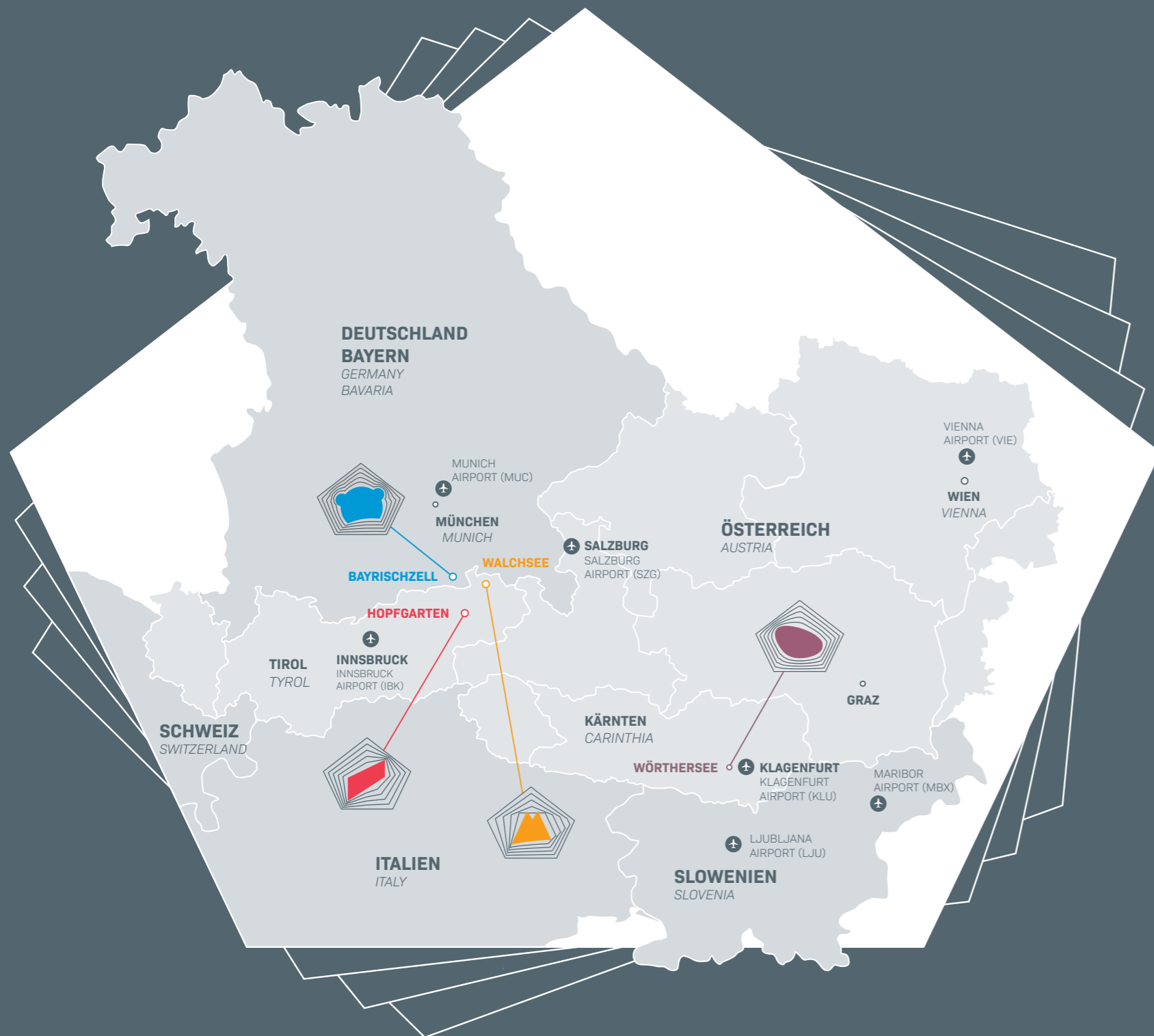
16  
EVENT ROOMS

1507 m<sup>2</sup>  
EVENT SPACE

2-890  
PEOPLE

425  
ROOMS & SUITES

Welcome to  
your destination!



**IN THE MIDDLE OF NATURE AND STILL EASY TO REACH**

Away from the hustle and bustle of the big cities, but just as easy to reach. All 4 Pletzer Resorts are close to **motorways, railway lines and international airports** and offer **ample parking** and **charging stations for electric cars**.

**We are happy to support you with the planning, organisation and logistics for your event.**

Distances to airports can be found in the details of the respective resorts.

# Green events @ green resorts

## WE EMBRACE OUR RESPONSIBILITY

It is our **personal** pledge not only to leave our guests with a lasting positive experience, but also to **minimise our ecological footprint on the environment**.

With our resorts, we are utilising one of the **most sensitive natural landscapes - the Alpine region**. Only by acting **responsibly** can this picturesque nature be **preserved** for the future.

**Social responsibility** in co-operation with our **employees** is also a matter of course for us. Among other things, this includes a trusting relationship, sustainably harmonised working conditions and fair pay.

After all, we see our working atmosphere and motivated employees as an **important resource** for the **satisfaction of our guests**.

## WE ATTACH GREAT VALUE TO:

- ◆ Low energy consumption
- ◆ Sustainable building materials
- ◆ Waste avoidance and targeted recycling of waste
- ◆ Serving local products
- ◆ Fair treatment of our employees
- ◆ Barrier-free access to event rooms and bedrooms
- ◆ Co-operation with social initiatives and local groups



## GREEN ARRIVAL

At Pletzer Resorts, we focus on sustainability in all areas, including your journey to our resorts.

### Excellent public transport connections:

Our resorts are located directly at railway stations and public transport stops. Ideal for an environmentally friendly and stress-free journey.

### Free e-shuttles to/from the station:

For an easy journey by train, we offer free hotel e-shuttles to and from the station.

### E-cars for hire at the resort:

Discover the surrounding area with our electric cars that can be hired on site and enjoy independent mobility without polluting the environment.

### E-charging stations on site:

You will find charging stations in all our resorts to promote your sustainable mobility.

# More is normal for us

*„As a family business, we want to provide our leisure and business guests with state-of-the-art care, exercise and regeneration in the Alpine nature, so that they feel better and are more successful in the long term.“*

*Manfred Pletzer*

We offer more than seminar rooms and technology. We know that **successful events** are all about **more: they are experiences that inspire and remain in the memory.**

Events, incentives, team building: no matter whether you are celebrating a private event or want to give your business meeting a festive setting. Whether it's a strategy meeting, kick-off, product presentation or team building, a Christmas party, wedding, christening, anniversary or milestone birthday - **we make sure that your event is a moving experience.**



## MORE OPTIONS

- ◆ **Exceptional** spaces for every occasion
- ◆ **Hybrid and virtual solutions** for your event
- ◆ **Green spaces** - outdoor event locations and green seminar rooms in the surrounding nature
- ◆ **Co-workation** with retreat options at the resort
- ◆ **Meet Green** - green events in green resorts
- ◆ **Exhibition areas** indoors and outdoors
- ◆ **Barrier-free** conference rooms and bedrooms
- ◆ **Non-stop business** - open all year round



## MORE ENERGY

- ◆ **Move** - fitness room, group & personal training, heated 25 m sports pool, guided tours
- ◆ **Relax** - heated pools, saunas, massages, beauty treatments
- ◆ **Energy kitchen** - regional, healthy and delicious
- ◆ **Bleisure** - combining business & leisure
- ◆ Recharge your **batteries** - directly in the **surrounding nature**

## MORE EXPERIENCES

- ◆ **Coaches, trainers** and **guest speakers** on current topics
- ◆ **Events & happenings in the region**
- ◆ **Sports facilities for every season** right on the doorstep
- ◆ **After-work drinks** in the hotel's own bars and terraces
- ◆ **Regional tickets** with numerous discounts
- ◆ **Adventure & regional enjoyment** in the immediate vicinity
- ◆ **Culture and sightseeing**





# Hard Facts

AT A GLANCE

4  
DESTINATIONS

365  
DAYS A YEAR

16  
EVENT ROOMS

1507 m<sup>2</sup>  
EVENT SPACE

2-890  
PEOPLE

425  
ROOMS & SUITES

#### STATE-OF-THE-ART AMENITIES

- ◆ Interactive 86" Newline monitors
- ◆ Digital flipcharts
- ◆ Poly Studio video bar for hybrid meetings
- ◆ High-speed Internet
- ◆ Bright and spacious rooms with plenty of natural light
- ◆ Basic equipment and extensive presentation material are of course standard in all rooms

#### MORE IS NORMAL FOR US

- ◆ Situated by lakes and mountains
- ◆ Large outdoor areas for new perspectives
- ◆ Energy kitchen with regional products
- ◆ Perfect balance in the Move & Relax areas
- ◆ More space for your ideas



Exclusive ambience directly on the Lendlagune between Lake Wörthersee and the city of Klagenfurt. Ideal for combining business and leisure.

5  
EVENT ROOMS

418 m<sup>2</sup>  
EVENT SPACE

2-200  
PEOPLE

142  
ROOMS & SUITES



In the centre of the Kitzbühel Alps with direct access to the SkiWelt Wilder Kaiser-Brixental. Perfect for mental exercise, creative flights of fancy and sporting challenges.

5  
EVENT ROOMS

466 m<sup>2</sup>  
EVENT SPACE

2-300  
PEOPLE

104  
ROOMS & SUITES



Feel-good ambience in a fantastic mountain panorama at the foot of the Kaiser Mountains and on the clear Walchsee. Alpine source of inspiration and tranquillity.

4  
EVENT ROOMS

373 m<sup>2</sup>  
EVENT SPACE

2-200  
PEOPLE

110  
ROOMS & SUITES



A modern symbiosis of business and family in the dreamlike setting of the Tegernsee-Schliersee Alpine region with a view of the Wendelstein massif.

2  
EVENT ROOMS

250 m<sup>2</sup>  
EVENT SPACE

2-190  
PEOPLE

69  
ROOMS & SUITES



MOVE &  
RELAX

*Upgrade your life.*

Our **Move & Relax** philosophy embodies a **holistic** approach to the pursuit of **well-being and quality of life** and goes **beyond traditional concepts** of **fitness and wellness**.

**Move & Relax** is all about bringing **exercise, regeneration and healthy nutrition** into balance and integrating them into everyday life.

This increases **concentration** and **creativity**, **brightens the mood** and **reduces stress**.

We have **translated scientific findings** from competitive sport **into everyday life** - suitable for everyone: **for every age and every performance level!**

**Move & Relax** was developed together with the Austrian Olympic ski jumping champion **Toni Innauer** and the Institute for **Sports Science at the University of Innsbruck**.

#### THE 3 PILLARS OF MOVE & RELAX

##### MOVE:

**Movement** is life and the drive for physical **strength, energy and vitality**.

##### RELAX:

Regular moments of **relaxation** are essential to **replenish energy reserves** and **revitalise the mind**.

##### EAT:

A healthy diet is the **fuel** for a healthy **body and mind**.

# Move

## Achieving more through movement

### MOVE & WORK

The megatrend of **health** spans every aspect of our lives - **including work**.

This is exactly where Move & Work comes in: with a **contemporary** understanding of **work and leisure**, of meetings, conferences and seminars, and one that combines the areas of health, work and quality of life in a unique way.

### MOVEMENT IS ALWAYS IN SEASON

Weather and seasons don't play a major role at the Pletzer Resorts - we **always** have opportunities to get out and about:

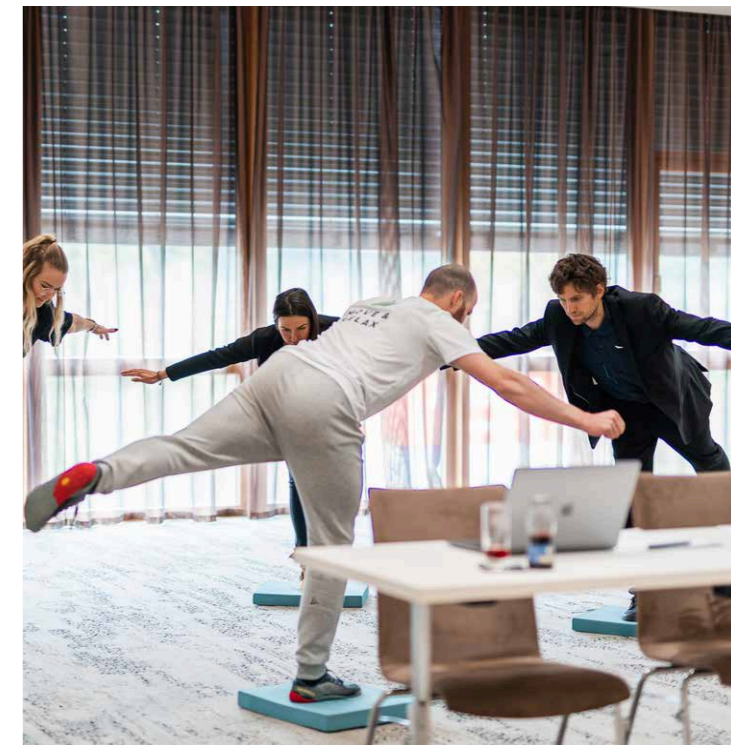
indoors in our **Move areas** in the 25-metre sports pool heated all year round, or outdoors in the fascinating landscapes surrounding our resorts.

### ACTIVE BREAK - NEW ENERGY IN 10 MINUTES

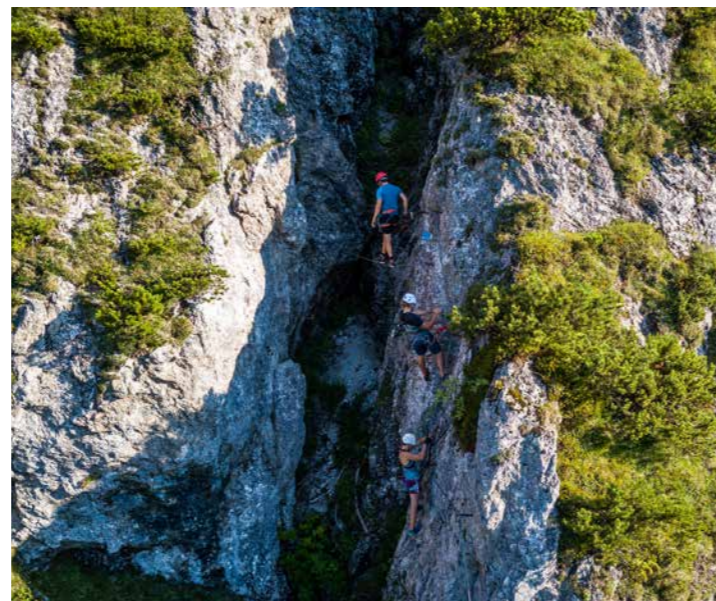
The active break is a **professionally supervised** refreshment between the seminar units. In just a few minutes, body and mind are mobilised and activated - **even in a business outfit**.

### OVERVIEW (all information and offers can be found on the individual resort websites)

- ◆ Well-equipped fitness area
- ◆ 25-m sports pool heated all year round & pools
- ◆ Spiro-ergometry
- ◆ Bioelectrical impedance analysis
- ◆ Personal training
- ◆ Courses & sports programme
- ◆ 12 Tiroler - specially developed group training
- ◆ Yoga
- ◆ Aqua-fit
- ◆ Guided bike & hike tours
- ◆ Private bike guides
- ◆ Bike riding technique training
- ◆ Running & swimming technique training
- ◆ Muscle regeneration 2.0
- ◆ Sports nutrition recommendations
- ◆ Mobility & joint health







# Relax

Get more from life through relaxation



## BECAUSE REGENERATION BOOSTS PERFORMANCE

For **lasting well-being**, the body and mind also need sufficient **regeneration**. So enjoy your own little **individual little islands of peace** and **breathers** for relaxation and to **re-charge your batteries**.

All **Pletzer Resorts** offer **spacious relaxation areas** and a variety of **treatments**.

## HAVING FUN IS RELAXING

Just **focussing** on the **moment**, **letting go** and simply **having fun** helps you to calm down and reduce stress.

A **tour by bike**, or dangling on the **high ropes**, **ski runs** on the doorstep, many **events just around the corner**, or simply a **drink with friends** at the hotel bar - **adventure, culture and nature** can be found around all Pletzer Resorts.

**We provide tips and organise your experience.**

## OVERVIEW (all information and offers can be found on the individual resort websites)

- ◆ Massages from classic to detox
- ◆ REVIDERM cosmetic treatments
- ◆ Beauty packs and baths
- ◆ Pedicure and manicure
- ◆ Saunas and steam baths
- ◆ Infra-red cabins
- ◆ Indoor and outdoor pool
- ◆ Relaxation rooms and sun terraces
- ◆ Relaxed hiking and high alpine climbing
- ◆ Extraordinary experiences in nature
- ◆ Culinary excursions
- ◆ Visit alpine pastures and distilleries
- ◆ Traditional events
- ◆ Sightseeing and shopping trips
- ◆ Cultural events and concerts
- ◆ Après-ski or wine tasting



# Energy Kitchen

More enjoyment with valuable nutrition

Regional ingredients, valuable ingredients and dishes that invite you to savour them.

The specially composed **Move & Relax dishes** from our in-house **Energy Kitchen** are created by **highly trained** and **experienced chefs** and support both the **body** and the **mind** to stay **fit** every day.



## WHAT OUR ENERGY KITCHEN STANDS FOR

- ◆ High-quality proteins, healthy fats and sensible carbohydrates
- ◆ Nutrient-rich foods
- ◆ Avoidance of unhealthy fats, high-glycaemic-index and nutrient-poor ingredients
- ◆ Strengthening the immune system and replenishing energy stores for more strength and endurance in everyday life and sport
- ◆ Tastes good, doesn't make you tired and increases individual well-being

## REGIONAL PRODUCE

90% of our ingredients come from Austria and meat even comes from our own production on the Pletzer family farm in Tyrol.

## ORGANIC PRODUCTS

We source food and ingredients exclusively in organic quality, where available.

## NUTRITIONAL ADVICE

Our trained sports scientists will be happy to advise you with the help of spiro-ergometry and bioelectrical impedance analysis. You will learn how to eat more healthily in line with exercise and regeneration.

## PREFERENCES AND INTOLERANCES

If you follow a vegan or gluten-free diet or have a food intolerance, we will be happy to recommend the right dish for you.



# Strengthen & promote team spirit

## WHERE PEOPLE MEET, SOMETHING HAPPENS

Bringing people together and enabling positive experiences - that's what we're all about.

The Pletzer Resorts are surrounded by **fantastic opportunities to do just that!**

From **exciting outdoor adventures** like **canyoning** or **stand-up paddling** to special activities such as **indoor skiing** on the iWall or **bike & hike tours with our guides** - there are many opportunities for **shared experiences to promote cohesion** and the **sense of togetherness**.

**We offer (almost) all of them!**

## A (SMALL) OVERVIEW

- ◆ Guided hikes
- ◆ Guided bike & road bike tours
- ◆ Golf
- ◆ Yoga
- ◆ Canyoning
- ◆ Experience-orientated team & leadership training
- ◆ Rhetoric workshops
- ◆ Show cooking
- ◆ Visits to traditional businesses

**We are happy to work with you to develop customised programmes for your requirements.**



# Die neue Art zu arbeiten

## NEW WORK GENERATION

Work is becoming increasingly detached from traditional systems. The **blurring of the boundaries between work and leisure** is also reflected in the concept of **workation**, in which holidays and work are **consciously** combined.

There is also an increasing trend for **entire company teams** to opt for a workation and use it **as an incentive or team-building measure**, because it is well known that after work comes enjoyment (together).

**Employer branding at its best!**

## WORKATION AT THE PLETZER RESORTS

- ◆ Communal lounges and private retreats for focused working
- ◆ Breathtaking nature for fresh inspiration
- ◆ Excellent infrastructure and Internet connection
- ◆ Co-working spaces directly at the resorts
- ◆ Business corner
- ◆ Move & Relax areas in all resorts
- ◆ Numerous activities for active recreation



## TIP FOR FAMILIES: THE BAYRISCHZELL BUSINESS & FAMILY HOLIDAY

Our resort in Bavaria achieves the **seemingly impossible**:

the symbiosis of **business and family happiness** is at the centre of our resort in Bavaria. The **Bayrischzell Familotel Oberbayern** has developed a **successful concept** for combining a **business and family hotel**.

**Workation with the whole family!**

# Memories that last a lifetime



## CELEBRATE!

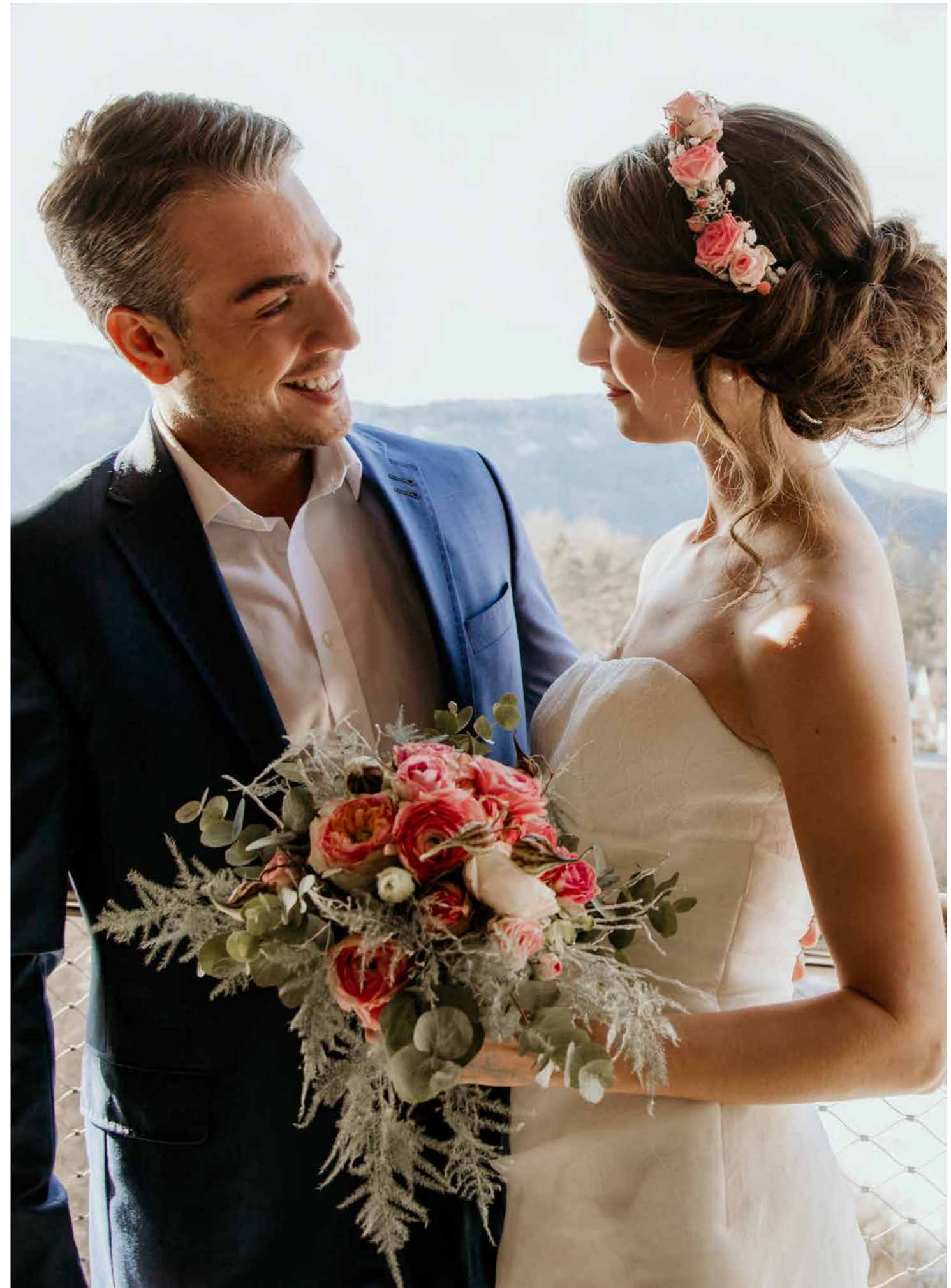
The **best day of your life**, a milestone **birthday**, **Christmas party** or **christening** - we make **your event an unforgettable experience** and cater to the **individual wishes** and needs of your guests with great sensitivity.

**Working with you**, we create a first-class menu and plan the entertainment and programme of activities.

And the **dreamlike natural backdrop** provides the perfect setting for **photos**, **ceremonies** and **outdoor parties**.

## AT A GLANCE

- ◆ Function rooms and banqueting halls
- ◆ Large outdoor areas for outdoor celebrations
- ◆ Beautiful nature for the most beautiful pictures
- ◆ Overnight accommodation for your guests
- ◆ Outstanding cuisine
- ◆ Flexible and customised planning





# Sustainable by conviction

## LIVING SUSTAINABILITY AT THE PLETZER RESORTS

Sustainability is a **key component of our corporate philosophy** - in terms of **economical** as well as **social and ecological aspects**. You can travel consciously and enjoy yourself to the full in our hotels with a **clear conscience**.

The Pletzer Resorts are the **first tourism company in Tyrol** to participate in the Standortagentur Tirol's **sustainability assessment**. The Group thus plays a **pioneering role** in the industry.

## HOW WE PRACTISE SUSTAINABILITY

**Regional & seasonal products:** Short supply chains save CO2 and guarantee the freshness and quality of our food

**Avoiding waste:** Reusable packaging, consistent waste separation and energy generation from food waste

**Natural materials & building biology:** Sustainable architecture, good insulation and energy-saving ventilation

**Washing and cleaning:** Cooperation with ecological and certified partners and use of sustainable products

**CO2-saving measures:** Highly efficient, particularly environmentally friendly heat pumps, photovoltaics, heat recovery





# Das Seepark Würthersee Resort

CARINTHIA, AUSTRIA

## BUSINESS MEETS LEISURE

Nestled between **the lake and the city**, we are the ideal place to combine **business and enjoyable leisure**. Lake Würthersee is a **favourite place for connoisseurs**. At the **Seepark Würthersee Resort** we offer an **exceptional environment** for your **event and inspirational experiences**.

### WHAT WE OFFER

**Exclusive meetings:** Relaxed elegance, exquisite cuisine and first-class service in a unique location.

**Natural flair:** A picturesque park landscape spanning 3,000m<sup>2</sup>, located directly on the Würthersee lagoon and next to the Europapark.

**Culinary delights:** A hotel restaurant with 120 seats and a sun terrace.

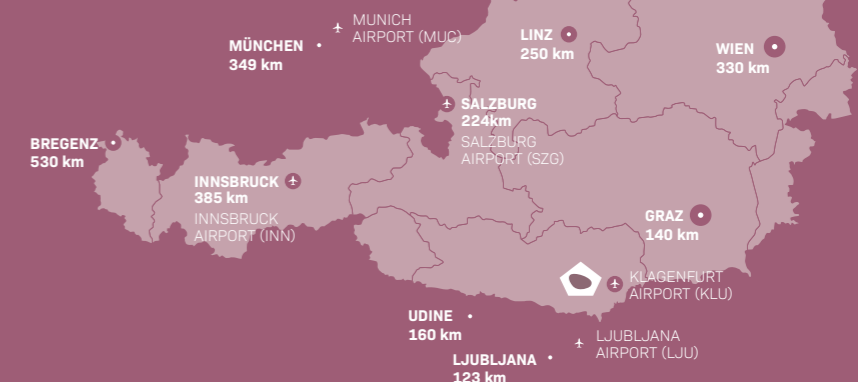
**Activity with a view:** Modern Move area and a 25-metre sports pool with a view of Lake Würthersee.

**Convenience:** Free parking with 100 spaces, optional underground car park and e-charging stations in the outdoor area and garage.

**Group travel made easy:** Free coach parking directly in front of the hotel.

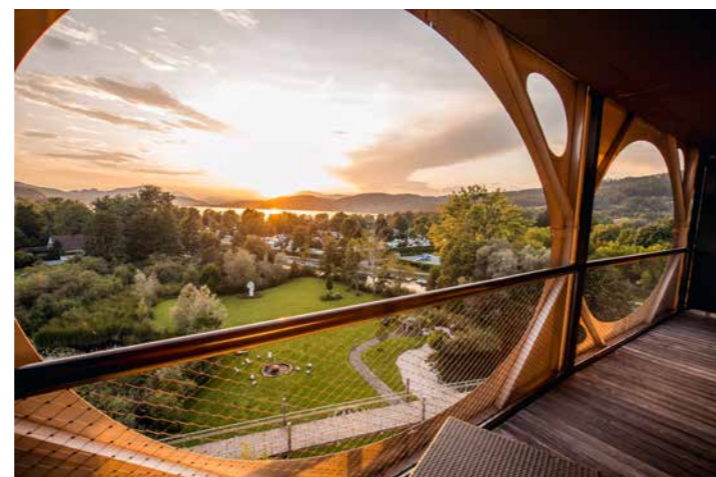
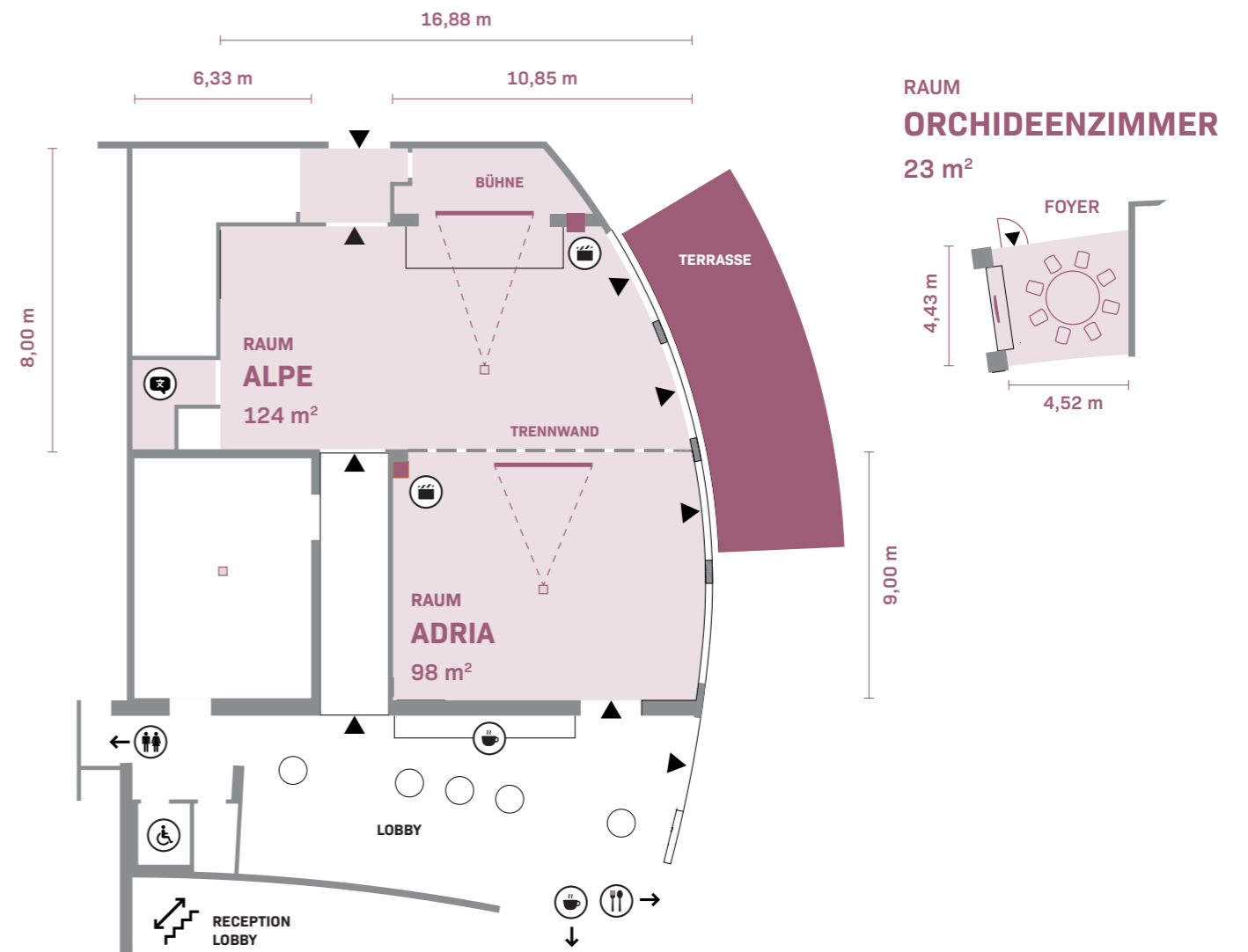
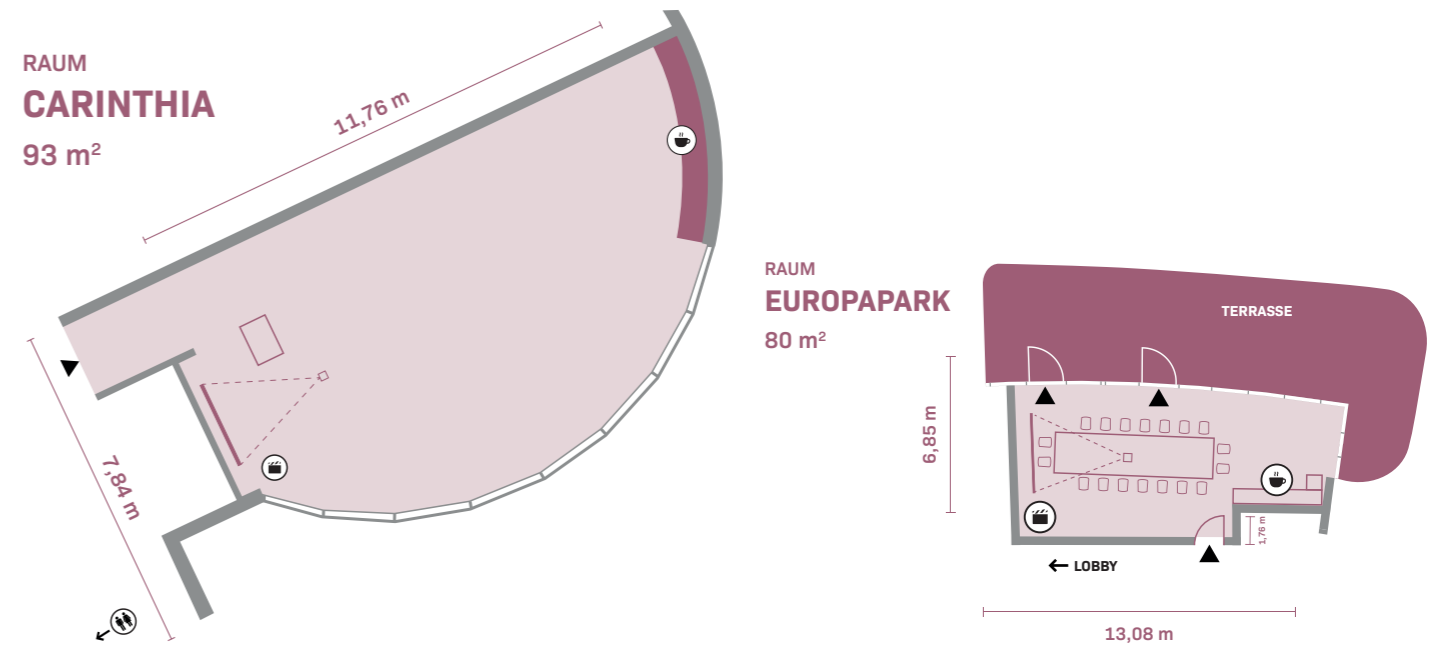
### DISTANCES

Motorway A2: 0,5 km  
 Railway station Klagenfurt: 5 km  
 Airport Klagenfurt: 13 km  
 Airport Graz: 138 km  
 Airport Ljubljana: 67 km  
 Würthersee: 0,8 km  
 City Centre Klagenfurt: 3,6 km



	AIR CONDITIONING	DAYLIGHT	m <sup>2</sup>	HEIGHT (m)	ROOM CAPACITIES						
<b>EVENT ROOMS</b>											
<b>PARK VIEW</b>											
Alpe-Adria (Alpe & Adria)	●	●	222	4,00	200	100	50	42	150	57	200
Alpe	●	●	124	4,00	110	65	36	32	72	52	120
Adria	●	●	98	4,00	90	52	30	24	60	34	80
<b>GROUND FLOOR</b>											
Carinthia	●	●	93	4,00	90	41	18	22	-	34	-
Europapark	●	●	80	4,00	50	32	20	16	-	28	-
Orchideenzimmer	●	●	23	4,00	-	-	10	-	-	-	-
<b>GREEN SPACE DIRECTLY AT THE LEND LAGUNE</b>											
Parklands			3.000	-	-	-	-	-	-	-	1.500

**5** EVENT ROOMS     
**418 m<sup>2</sup>** EVENT SPACE     
**2-200** PEOPLE     
**142** ROOMS & SUITES





# Das Hohe Salve Sportresort

**TYROL, AUSTRIA**

## A SPORTING BUSINESS

Immerse yourself in a world **full of movement and possibilities**. At the **Hohe Salve Sport Resort**, we create the space for **sporting challenges, creative breakthroughs** and **productive brainstorming**.

Here, movement becomes the **source of your inspiration** as you explore the breathtaking surroundings of the **Kitzbühel Alps**.

## WHAT WE OFFER

**Unbeatable location:** motorway, train station and cable car - all right on the hotel doorstep.

**Seamless transition:** ski-in/ski-out, hike-in/hike-out, bike-in/bike-out for active experiences in the great outdoors.

**Movement with a view:** modern Move area and a 25-metre sports pool with a view of the Hohe Salve.

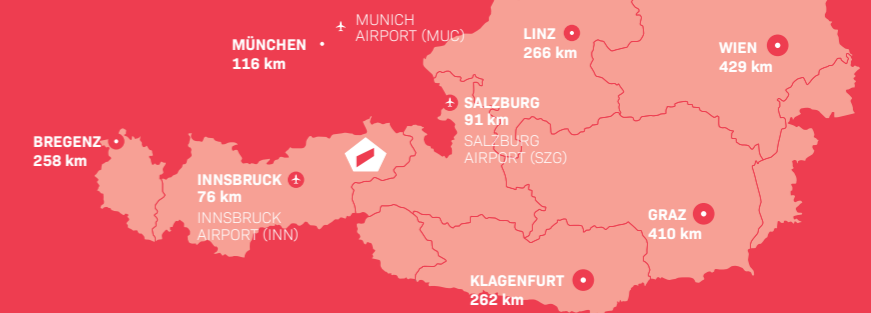
**A wide range of design options:** Spacious rooms and numerous seating areas offer space for events, congresses and exhibitions.

**Excellent evening catering:** Culinary delights in our à la carte restaurant with terrace and wine bar.

**Comfortable journey:** Free parking facilities.

## DISTANCES

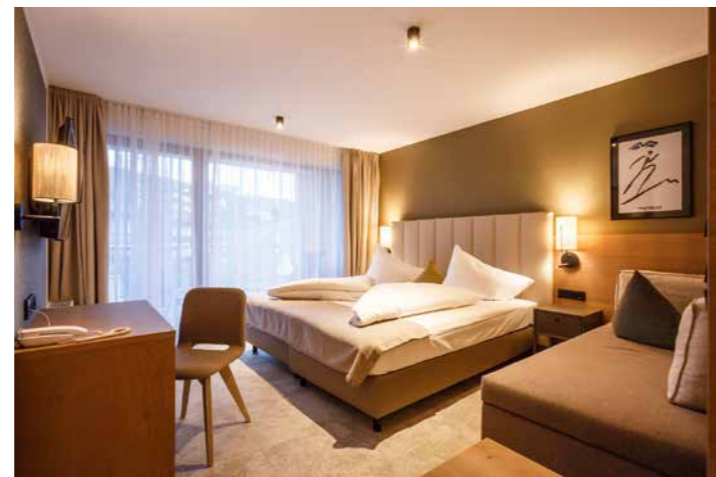
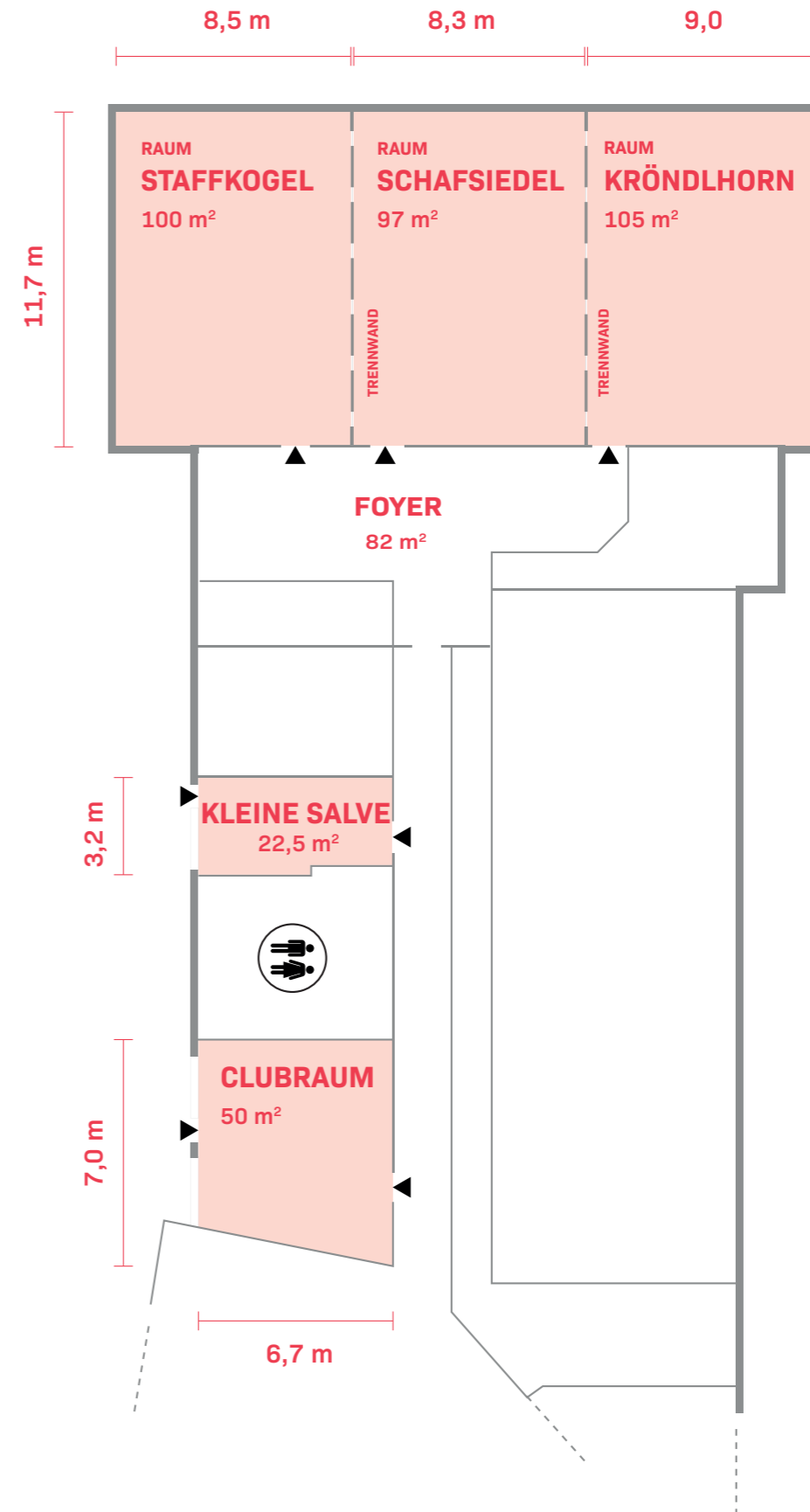
Motorway A12: 11 km  
 Train station: Hopfgarten  
 Mountain lift: 0,04 km  
 Airport München: 147 km  
 Airport Innsbruck: 76 km  
 Airport Salzburg: 128 km  
 Town centre: 0,2 km

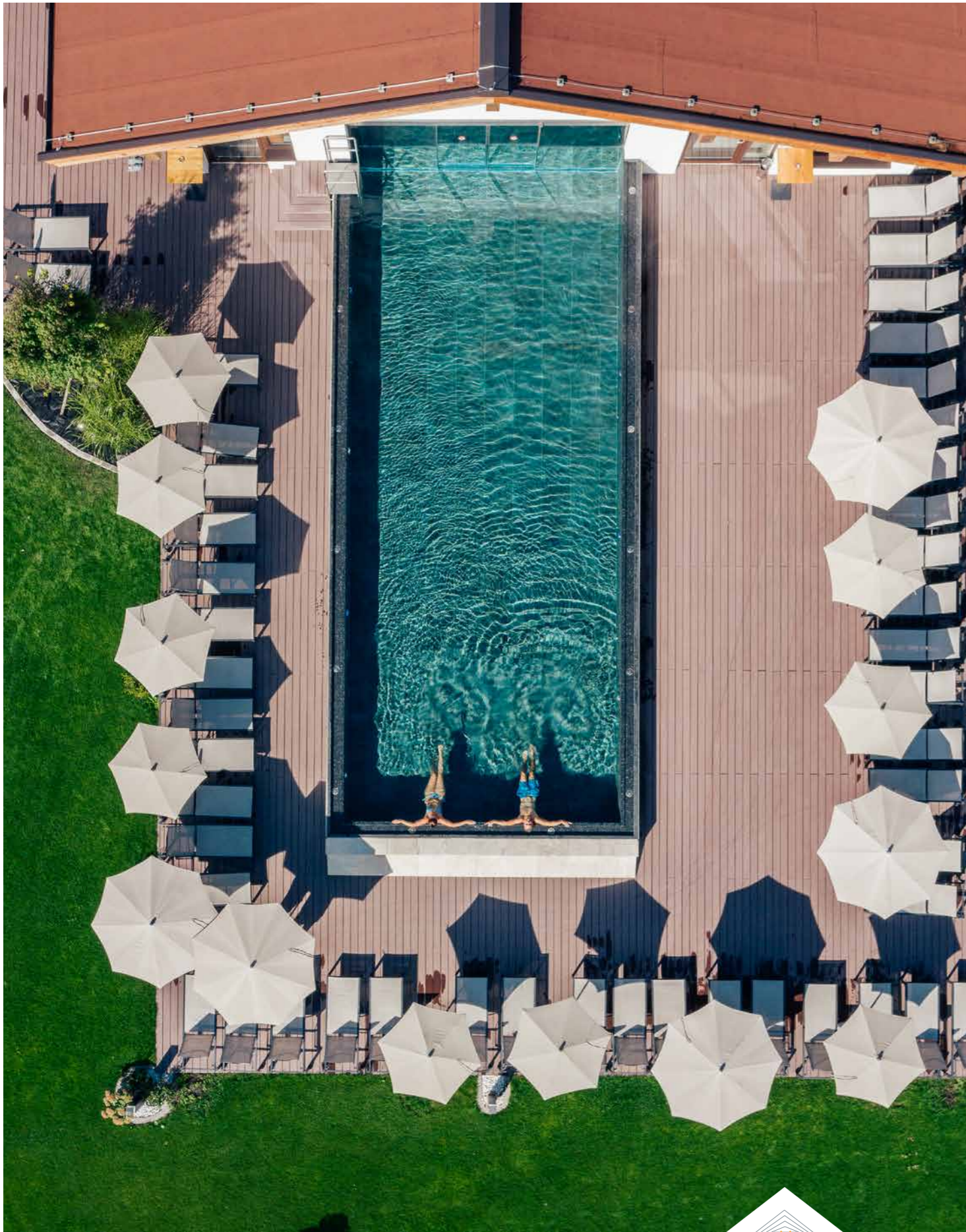




	AIR CONDITIONING	DAYLIGHT	m <sup>2</sup>	HEIGHT (m)	ROOM CAPACITIES						
EVENT ROOMS											
Kröndlhorn	✓	✓	105	3,6	58	36	50	23	21	60	80
Schafsiedel	✓	✓	97	3,6	84	45	50	30	21	50	80
Staffkogel	✓	✓	100	3,6	66	45	50	27	21	-	80
Kurzer Grund (Kröndlhorn & Schafsiedel)	✓	✓	212	3,6	156	84	72	42	80	-	-
Kitzbüheler Alpen (Kurzer Grund & Staffkogel)	✓	✓	312	3,6	247	120	180	-	-	-	300
Kleine Salve	✓	✓	22,5	2,60	-	-	8	-	-	-	-
Clubraum	✓	✓	50	2,60	-	-	13	13	-	-	-
EXHIBITION SPACE											
Foyer	✓	✓	82								

**5** EVENT ROOMS     
 **466 m<sup>2</sup>** EVENT SPACE     
 **2-300** PEOPLE     
 **104** ROOMS & SUITES





# Das Walchsee Aktivresort

TYROL, AUSTRIA

## BUSINESS WITH A FEEL-GOOD FACTOR

New perspectives for your business: the Walchsee Active Resort in the beautiful Kaiserwinkl region of Tyrol offers a picturesque setting to stimulate creative thought processes, grow together as a team and find the perfect balance of peace, relaxation and outdoor activities. Breathe in the fresh mountain air and draw strength and inspiration from nature.

### WHAT WE OFFER

**Panoramic view:** Enjoy the view of the world-famous and majestic Kaiser Mountains.

**Pure refreshment:** Lake Walchsee, Tyrol's warmest bathing lake, right on the doorstep.

**Authentic experiences:** Collaboration with mountain pastures, alpine dairies and distilleries for special insights.

**Easy accessibility:** Close to the motorway (toll-free) and plenty of free parking.

**New horizons:** From May 2024, our exclusive Walchsee Lakeside annex awaits you.

- ▲ Modern extension creates a direct connection to the lake
- ▲ For all guests: one resort, two buildings
- ▲ Open fitness area in a prime lakeside location
- ▲ Separate seminar area for events and special celebrations
- ▲ First-class à la carte restaurant with bar in a unique location on the lake shore

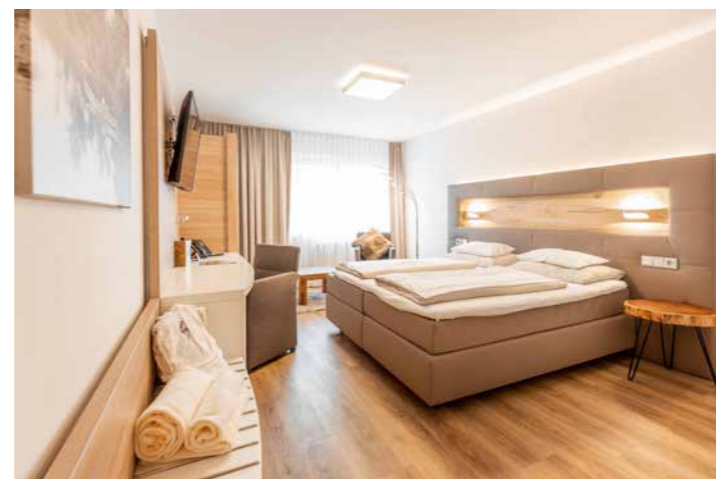
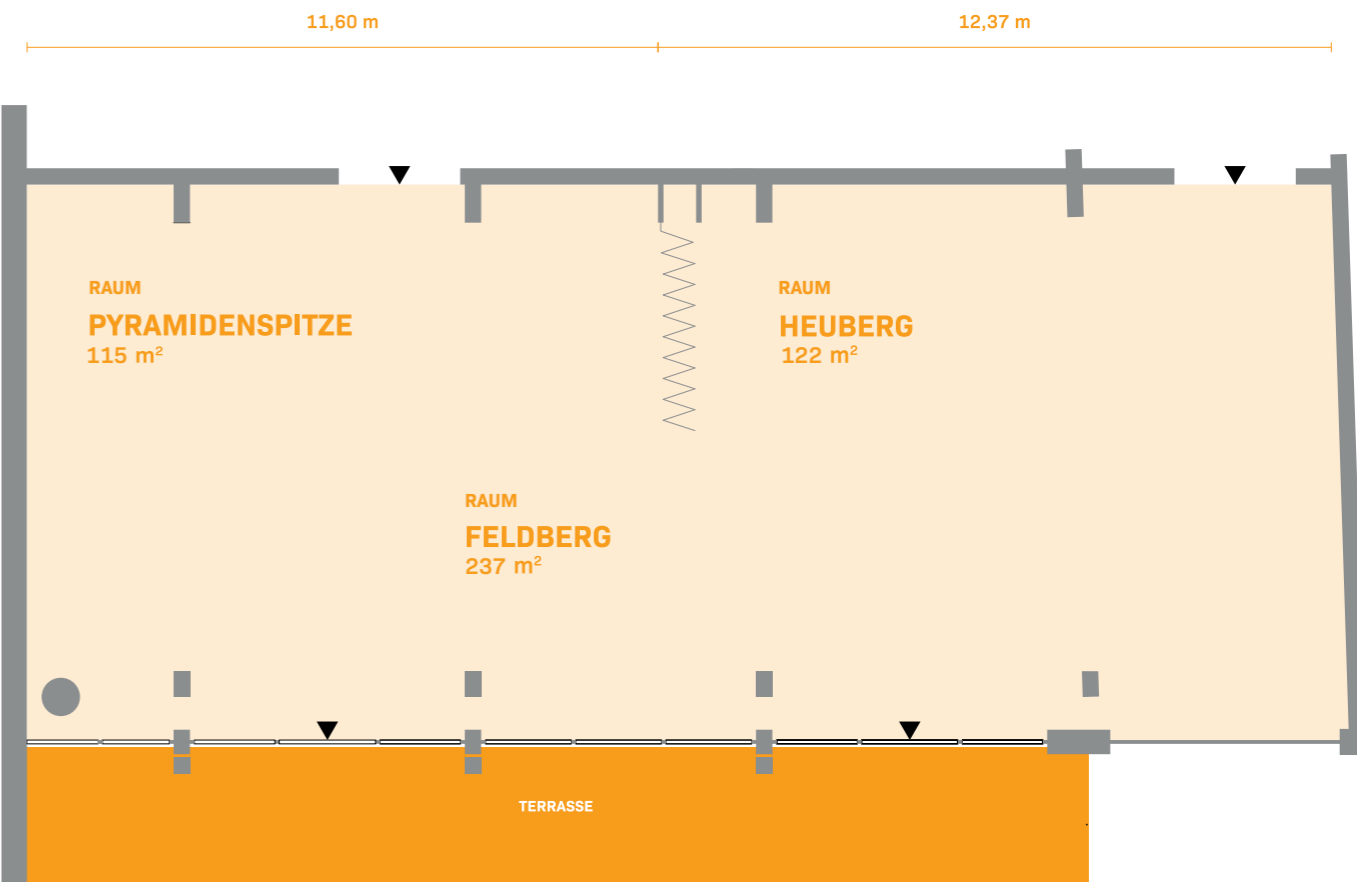
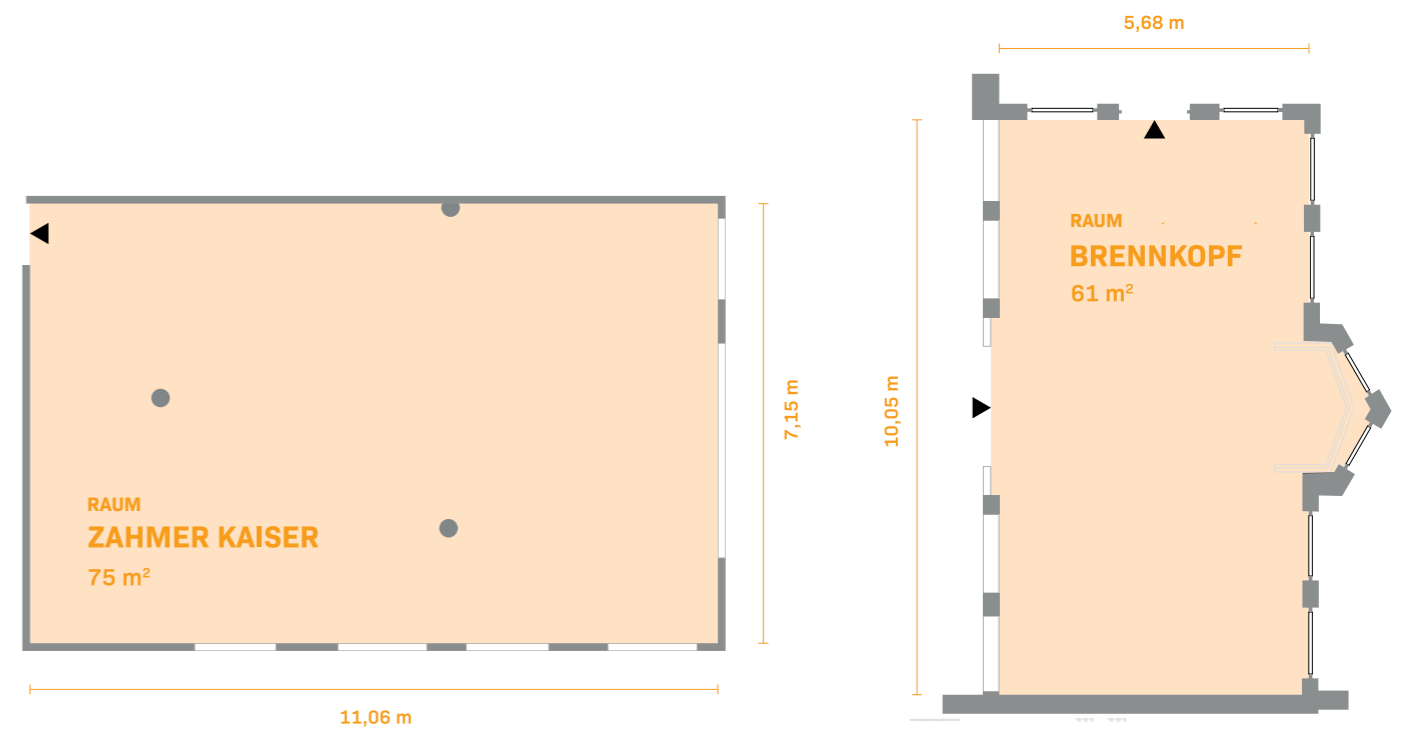
### DISTANCES

Airport München 133 km  
 Airport Salzburg: 73,9 km  
 Airport Innsbruck: 98,4 km  
 Train station Kufstein: 18,5 km  
 Bus station Walchsee Dorfplatz: 150 m  
 Motorway A93: 15 km  
 Salzburg exhibition centre: 73,9 km  
 Munich exhibition centre: 98,5 km  
 Passionsspielhaus Erl: 13,5 km  
 City centre Kufstein: 18,5 km  
 Walchsee: 300 m oder direkt am Ufer



	AIR CONDITIONING	DAYLIGHT	m <sup>2</sup>	HIGHT (m)	ROOM CAPACITIES			
<b>EVENT ROOMS</b>								
<b>ACTIVE RESORT (MAIN BUILDING)</b>								
Brennkopf	▲	▲	61	2,80	30	15	15	15
Zahmer Kaiser	▲	▲	75	2,90	50	20	15	-
<b>REFUGIUM LAKESIDE</b>								
Feldberg (Pyramidenspitze & Heuberg)	▲	▲	237	2,90	190	96	56	50
Pyramidenspitze	▲	▲	115	2,90	85	48	28	25
Heuberg	▲	▲	122	2,90	85	48	28	25

**4** EVENT ROOMS     
 **373 m<sup>2</sup>** EVENT SPACE     
 **2-200** PEOPLE     
 **110** ROOMS & SUITES





# Das Bayrischzell Famihotel Oberbayern

BAVARIA, GERMANY

## BUSINESS MEETS FAMILY

In Bayrischzell, in the centre of the **Tegernsee-Schliersee Alpine region**, lies Germany's **first** lifestyle hotel where **seminars, conferences or learning camps can be held with the whole family**. Here, the **combination of business and family** becomes an enriching experience.

Welcome to a place where business and family time flow harmoniously into one another.

## WHAT WE OFFER

**Close by:** Only an hour away from Munich and with the Bavarian regional railway right on your doorstep.

**Spacious tranquility:** Our spacious suites from 40 square metres offer the perfect space for retreat.

**Something for everyone:** We offer separate areas for business guests and holiday guests.

**Family friendliness included:** While you are at work, we look after your little ones with professional child and baby care.

**A treat for the palate:** Enjoy culinary highlights in our hotel restaurant with 200 seats and in the cosy Zirbenstube with 40 seats.

**Convenient arrival:** Free parking spaces and coach parking.

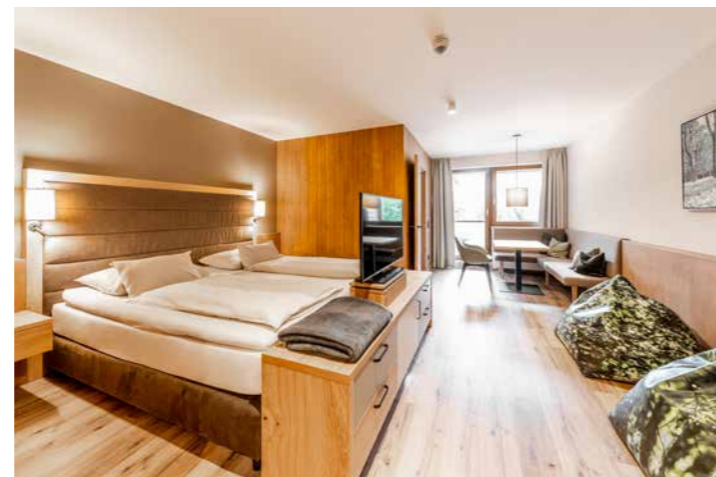
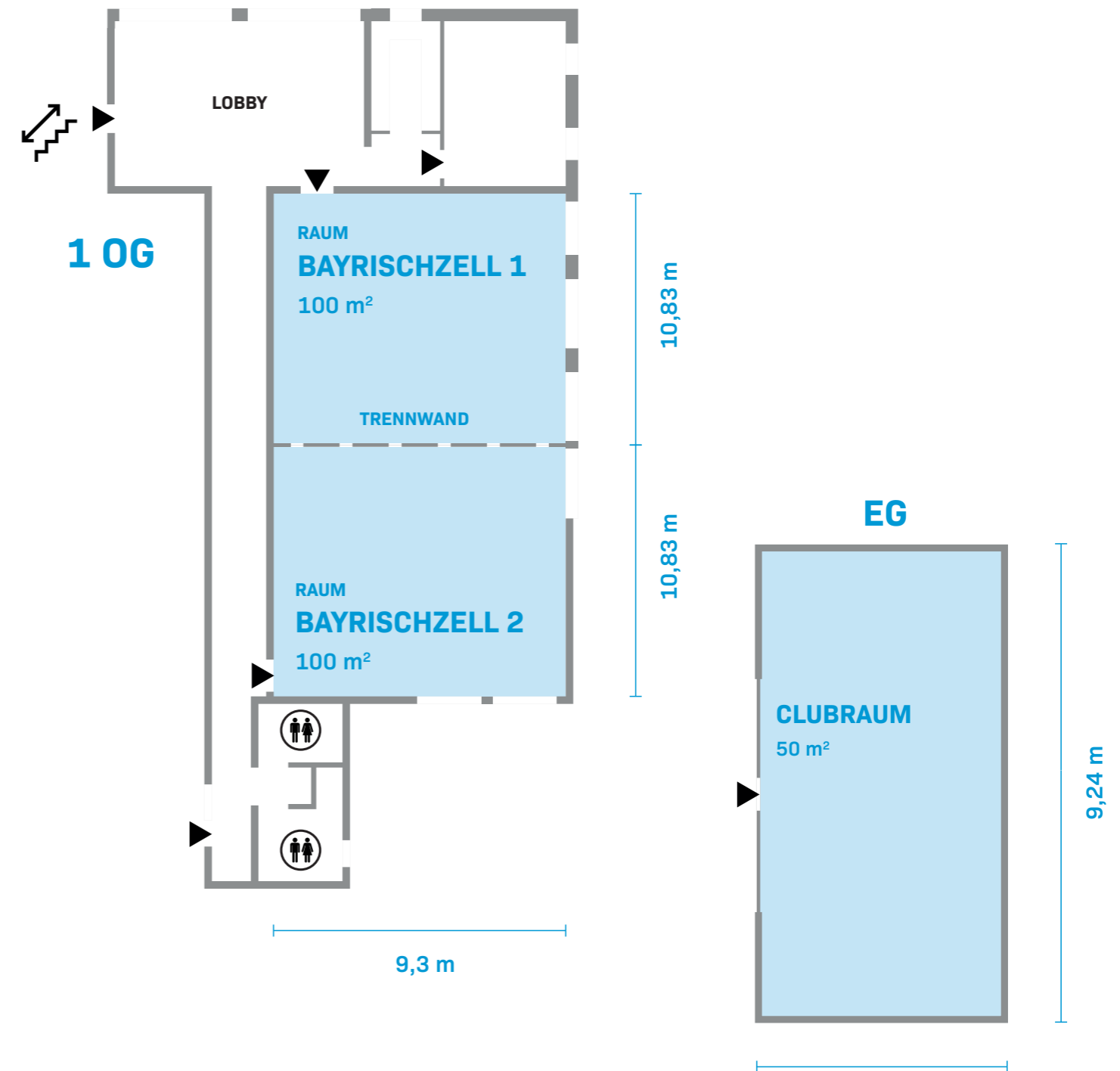
## DISTANCES

Motorway A8: 26,9 km  
 Train station Bayrischzell: 280 m  
*(hourly train journeys, takes just under 1 hour to Munich)*  
 München Airport: 113 km  
 Salzburg Airport: 107 km  
 Mountain lift Sudelfeld: 1 km  
 Wendelstein cable car: 3 km



	AIR CONDITIONING	DAYLIGHT	m <sup>2</sup>	HEIGHT (m)	ROOM CAPACITIES							
<b>VERANSTALTUNGRÄUME</b>												
Bayrischzell 1			100	2,90	80	40	36	28	48	50	70	
Bayrischzell 2			100	2,90	80	40	36	28	48	50	70	
Bayrischzell 1 + 2			200	2,90	190	96	56	50	104	92	140	
<b>BREAKOUT-ROOM</b>												
Clubraum			50	2,90								

2 EVENT ROOMS      250 m<sup>2</sup> EVENT SPACE      2-190 PEOPLE      69 ROOMS & SUITES



# The Pletzer Story

## A FAMILY BUSINESS WITH STRONG ROOTS

The PLETZER Group has stood for sustainable growth for over 60 years. The roots of the **family business** go back to **Councillor of Commerce Anton Pletzer**, who grew up with agriculture, tourism and winter sports on the Melk-Alm on the Hahnenkamm in Kitzbühel. Although a great young hope of the Kitzbühel Ski Club, he decided to set up his first company - an installation business - at the age of 19, which laid the foundations for today's group of companies.

However, his love for the Alpine region and his passion for tourism always remained: he has been chairman of the TVB Hopfgarten since 1972 and has been a shareholder for more than four decades, and is now the majority shareholder and Managing Director of the Hohe Salve mountain railway.

2001 saw the move into the hotel business with the takeover of today's **Hopfgarten Familotel Tirol**.

## SUSTAINABLE, ACTIVE AND ON THE MOVE

The **strong roots in the Alpine region** and the awareness of tradition, but also innovation, remain the hallmarks of the companies in the tourism sector.

In 2009, **the Seepark Wörthersee Resort** was completed in Klagenfurt, which was taken over by Anton Pletzer's son Manfred in 2012, who already had 30 years of experience in the Group's industrial sector.

From then on, **Manfred Pletzer** has been driving the tourism industry forward and is supported by his **wife Marion**, who is in charge of the resorts' **interior design**.

2016 saw the opening of **the Hohe Salve Sport Resort** which was built directly at the Hohe Salve valley station.

In 2017, the traditional Schick hotel was renovated and reopened as the **the Walchsee Active Resort**, which will be extended in 2024 by the **Lakeside annexe** directly on the lake shore.

In between, in 2020, the newly renovated **Bayrischzell Familotel Oberbayern** re-opened its doors.

Back in 2018, Manfred Pletzer merged all of the businesses under the **PLETZER RESORTS** brand with the focus on **Move & Relax**

*"We are a traditional Tyrolean family business and develop, operate and invest in sustainable companies and properties in Austria and Germany."*



- HIGHLIGHTS**  
**PLETZER RESORTS**
- ◆ 5 hotels
  - ◆ 950 beds
  - ◆ 200.000 overnight stays

*"As a family business, we want to provide our leisure and business guests with state-of-the-art care, exercise and regeneration surrounded by Alpine nature, so that they feel better and are more successful in the long term."*

# The Pletzer house of values



- VERTRAUEN TRUST
- LEISTUNG POWER
- INNOVATION INNOVATION
- VERANTWORTUNG RESPONSIBILITY
- TRADITION TRADITION

The **tradition** of a family business with strong roots in the Alpine region and a high degree of **responsibility** are the principles behind why we think and act sustainably with regard to the environment and society. We have long-term ties with our locations and act as a reliable and **trustworthy** partner for our stakeholders. Many years of experience, in-depth expertise and a high level of **commitment** from our employees are valued. Ongoing product and service **innovations** bring our services even more in line with the needs of our customers, increasing our competitiveness.

PR

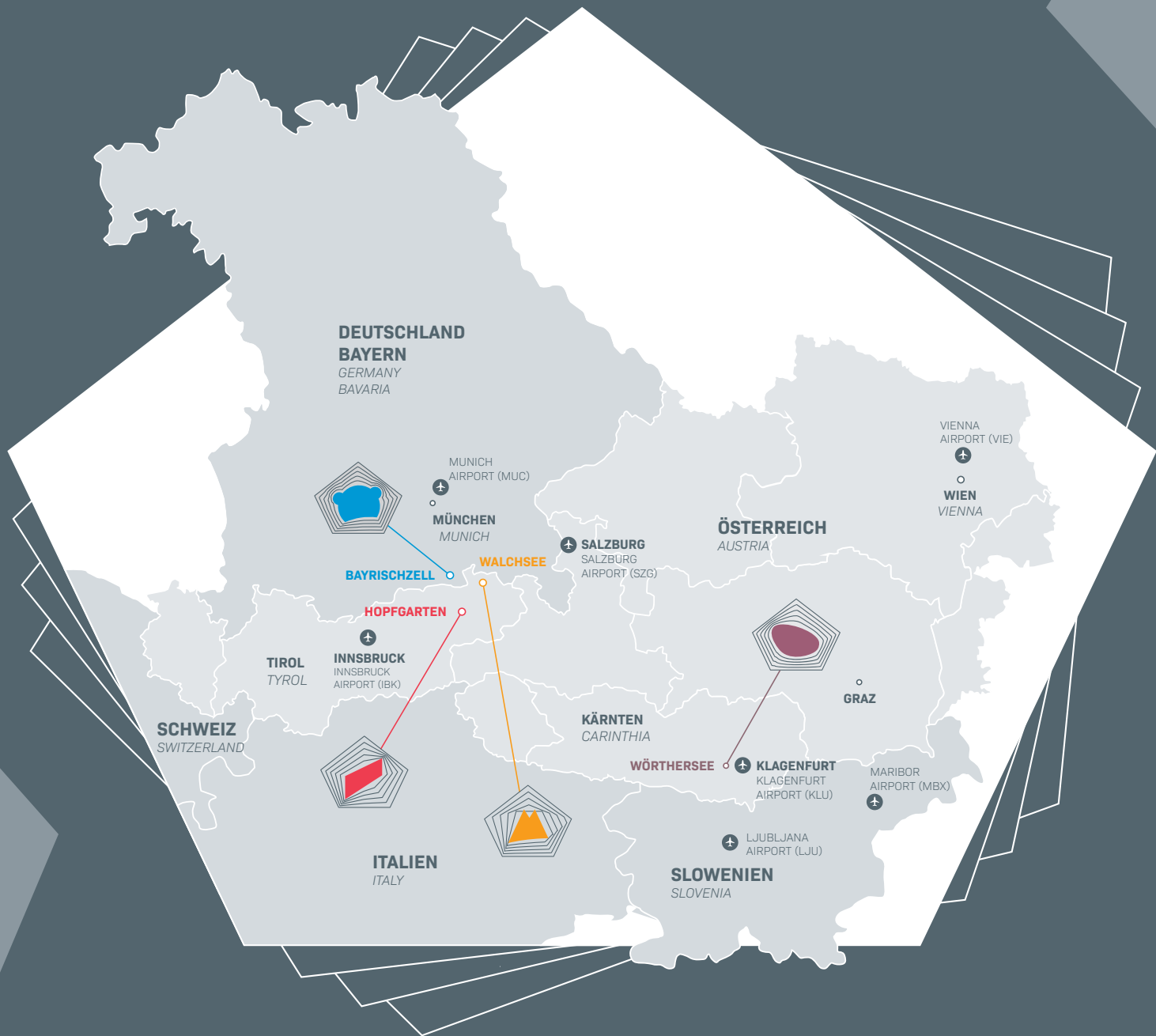
**PLETZER RESORTS**  
 MOVE & RELAX



Manfred und Marion Pletzer mit ihren drei Söhnen



KomRat Anton Pletzer mit seiner Frau Heidi



DAS   
**SEEPARK**  
 WÖRTHERSEE RESORT

DAS   
**HOHE SALVE**  
 SPORTRESORT

DAS   
**WALCHSEE**  
 AKTIVRESORT

DAS   
**BAYRISCHZELL**  
 FAMILIOTEL OBERBAYERN

**DAS SEEPARK  
 WÖRTHERSEE RESORT**

Universitätsstraße 104  
 9020 Klagenfurt, AT  
 +43 463 2044 99 0  
 events@seeparkhotel.at

**DASSEEPARK.AT**

**DAS HOHE SALVE  
 SPORTRESORT**

Meierhofgasse 26  
 6361 Hopfgarten, AT  
 +43 5335 2420  
 event@hohesalve.at

**DASHOHESALVE.AT**

**DAS WALCHSEE  
 AKTIVRESORT**

Johannesstraße 1  
 6344 Walchsee, AT  
 +43 5374 5331  
 events@hotelwalchsee.at

**DASWALCHSEE.AT**

**DAS BAYRISCHZELL  
 FAMILIOTEL OBERBAYERN**

Kranzerstraße 6  
 83735 Bayrischzell, DE  
 +49 8023 8194 600  
 events@dasbayrischzell.de

**DASBAYRISCHZELL.DE**